

# ASTRALPOOL RECOMMENDATION

## POOL FINISH COLORS

Colors of pool shell materials recommended by AstralPool depending on the color of your pool's finish.



### COLORS OF POOL FINISHES

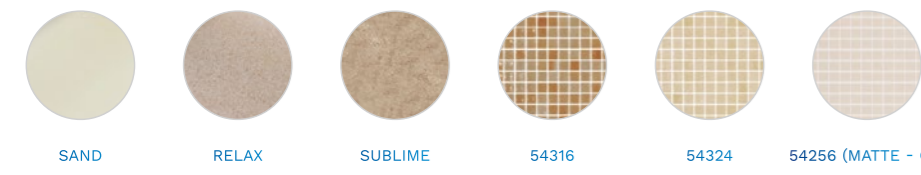


LIGHT BLUE ADRIATIC BLUE CARIBBEAN GREEN WHITE 67497 54357

RECOMMENDED COLORS  
DEPENDING ON POOL FINISH



WHITE



SAND RELAX SUBLIME 54316 54324 54256 (MATTE - C3)



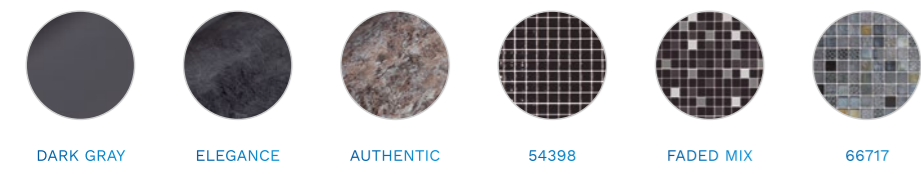
BEIGE CL090 RAL1015



LIGHT GRAY PLATINUM VANITY PERSIA SAND FADED MIX



LIGHT GRAY CL129 RAL7004



DARK GRAY ELEGANCE AUTHENTIC 54398 FADED MIX 66717



ANTHRACITE CL144 RAL7016



## FLUIDRA

For further information:  
[www.astralpool.com](http://www.astralpool.com)

FLUIDRA S.A.  
[www.fluidra.com](http://www.fluidra.com)

FLUIDRA

# POOL SHELL MATERIALS RANGE OF COLORS

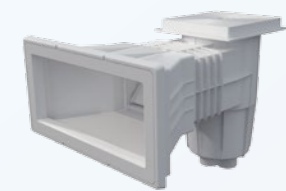
VERSATILITY AND COLOR  
FOR YOUR POOL

A wide range of recessed components  
in different colors for a perfect finish  
in your prefabricated pool.



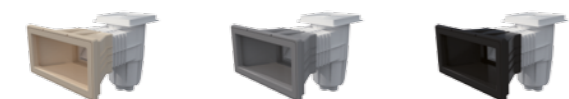
ASTRALPOOL 

15 L



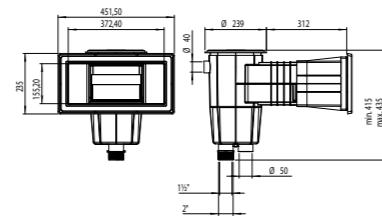
**SKIMMER WITH WIDE OPENING**

Supplied with adhesive gaskets, flange and screws.



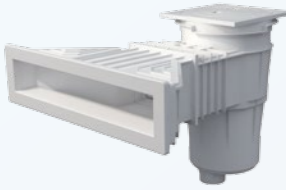
Beige | Light gray | Anthracite

01464CL090 | 01464CL129 | 01464CL144



sizes

17.5 L



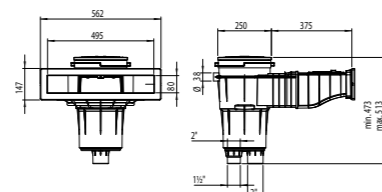
**SKIMMER NORM**

Range of 17.5-lskimmers suitable for installation in public and private pools. Made of white ABS with UV treatment, it comes with a weir flap, flow regulator, cover height adjuster and leaf trap. The water inlet is 495 x 80 mm. Recommended flow rate of 7.5 m<sup>3</sup>/h. Install one skimmer for every 25 m<sup>2</sup> of water surface area. For connections of less than 1 1/2 and 2", and a water overflow connection of Ø 40 mm.

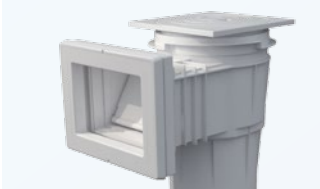


Beige | Light gray | Anthracite

56176CL090 | 56176CL129 | 56176CL144  
56299CL090\* | 56299CL129\* | 56299CL144\*



sizes



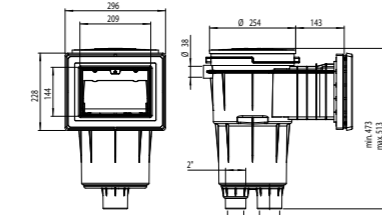
**SKIMMER WITH STANDARD OPENING AND SQUARE COVER**

Supplied with adhesive gaskets, flange and screws.



Beige | Light gray | Anthracite

11309CL090 | 11309CL129 | 11309CL144  
(11310CL090/ | 11310CL129 | 11310CL144  
11316CL090) | 11316CL129\* | 11316CL144\*



sizes



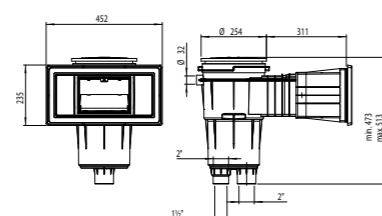
**SKIMMER WITH STANDARD OPENING AND SQUARE COVER**

Supplied with adhesive gaskets, flange and screws.



Beige | Light gray | Anthracite

11311CL090 | 11311CL129 | 11311CL144  
11317CL090\* | 11317CL129\* | 11317CL144\*



sizes

\* Product code without inserts: Parker model

SKIMMER COVERS

MAIN DRAINS

**ROUND COVER WITH ROUND FRAME**



White | Beige | Light gray | Anthracite  
00249-0600 | 00249-0600CL090 | 00249-0600CL129 | 00249-0600CL144

15 L

**ROUND COVER WITH ROUND FRAME**



White | Beige | Light gray | Anthracite  
05280-0600 | 05280-0600CL090 | 05280-0600CL129 | 05280-0600CL144

17.5 L

**ROUND COVER WITH SQUARE FRAME**



White | Beige | Light gray | Anthracite  
00249-0700 | 00249-0700CL090 | 00249-0700CL129 | 00249-0700CL144

15 L

**ROUND COVER WITH SQUARE FRAME**



White | Beige | Light gray | Anthracite  
05280-0700 | 05280-0700CL090 | 05280-0700CL129 | 05280-0700CL144

17.5 L

**MAIN DRAIN NORM**



White | Beige | Light gray | Anthracite  
56378 | 56378CL090 | 56378CL129 | 56378CL144  
56379 | 56379CL090 | 56379CL129 | 56379CL144



Range of main drains suitable for public and private swimming pools. Supplied with flat or antivortex grilles. Made of ABS with UV treatment, with a 2" side outlet and a 1 1/2" bottom outlet connection, and bottom outlet covered by semi-die cut tab.

**MAIN DRAIN Ø180**



White | Beige | Light gray | Anthracite  
01467 | 01467CL090 | 01467CL129 | 01467CL144

**CONCRETE POOLS** Body and grille in ABS. Grille fitted using screws. Max. flow rate: 13 m<sup>3</sup>/h.

**MAIN DRAIN NORM - ANTIVORTEX COVER**



White | Beige | Light gray | Anthracite  
56380 | 56380CL090 | 56380CL129 | 56380CL144  
56381\* | 56381CL090\* | 56381CL129\* | 56381CL144\*  
56382 | 56382CL090 | 56382CL129 | 56382CL144  
56383\* | 56383CL090\* | 56383CL129\* | 56383CL144\*



**PREFABRICATED POOLS** Range of main drains suitable for public and private swimming pools. Supplied with flat or antivortex grilles. Made of ABS with UV treatment, with a 2" side outlet and a 1 1/2" bottom outlet connection, and bottom outlet covered by semi-die cut tab.

**MAIN DRAIN Ø210**



White | Beige | Light gray | Anthracite  
00271 | 00271CL090 | 00271CL129 | 00271CL144  
06474\* | 06474CL090\* | 06474CL129\* | 06474CL144\*

**PREFABRICATED POOLS** 2" side outlet. Body and grille in ABS. Comes with self-adhesive gaskets, flange and screws. Maximum recommended flow rate: 13 m<sup>3</sup>/h.

\* Product code without inserts: Parker model

RETURN INLETS

SUCTION INLETS

POOL FLOOR INLETS

NET'N'CLEAN INLETS

**INLET NORM**



White | Beige | Light gray | Anthracite  
56499 | 56499CL090 | 56499CL129 | 56499CL144  
56500 | 56500CL090 | 56500CL129 | 56500CL144



**PREFABRICATED POOLS** Range of inlets suitable for installation in public and private pools. Made of ABS with UV treatment.

**INLET 2" GLUED THREAD (Ø50 MM)**



White | Beige | Light gray | Anthracite  
00332 | 00332CL090 | 00332CL129 | 00332CL144

**PREFABRICATED POOLS** Outer 2" thread, with inner Ø of 50 mm. Made of ABS. Comes with plug, gaskets and screws.

**INLET TILTING WITH GLUED PIPE (Ø75 mm)**

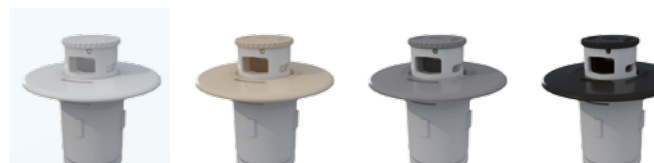


White | Beige | Light gray | Anthracite  
22353 | 22353CL090 | 22353CL129 | 22353CL144



**CONCRETE POOLS** Tilting body in PVC. Cover in ABS. Adjuster screw in POM. Maximum flow rate: 10 m<sup>3</sup>/h. Fits to Ø 75 mm piping and wall conduit with code number 21248.

**INLETS NET'N'CLEAN**



White | Beige | Light gray | Anthracite  
65234 | 65234CL090 | 65234CL129 | 65234CL144

Inner assembly kit for Net' N' Clean inlet.

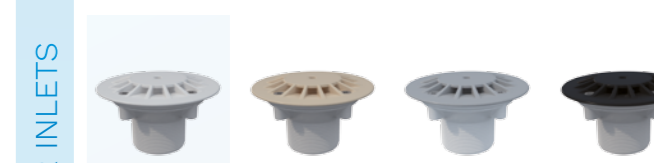
**INLETMULTIFLOW WITH 2" GLUED THREAD (Ø50 mm)**



White | Beige | Light gray | Anthracite  
00330 | 00330CL090 | 00330CL129 | 00330CL144

**PREFABRICATED POOLS** For ABS liner pools, with gaskets and screws.

**INLET 2" GLUED THREAD (Ø50mm)**

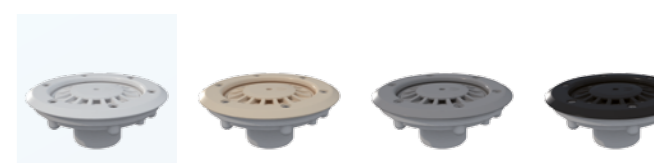


White | Beige | Light gray | Anthracite  
00303\* | 00303CL090\* | 00303CL129\* | 00303CL144\*



**CONCRETE POOLS** Return/suction inlet. Adjustable flow rate. Made of ABS plastic and screws in stainless steel. Maximum recommended flow rate compliant with standard EN 13451-1: 12 m<sup>3</sup>/h.

**INLET 2" GLUED THREAD (Ø50 mm)**

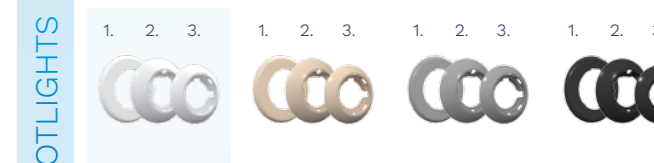


White | Beige | Light gray | Anthracite  
00340 | 00340CL090 | 00340CL129 | 00340CL144



**PREFABRICATED POOLS** Return inlet. Comes with gaskets, flange and screws. Adjustable flow rate. Maximum flow rate: 12 m<sup>3</sup>/h.

**LUMIPLUS FLEXI SPOTLIGHTS**



White | Beige | Light gray | Anthracite  
71209 | 71209CL090 | 71209CL129 | 71209CL144  
71210 | 71210CL090 | 71210CL129 | 71210CL144  
71211 | 71211CL090 | 71211CL129 | 71211CL144

**Faceplates**  
1. Niche 71209  
2. Slim 71210  
3. Rapid 71211  
The new family of LumiPlus Flexi spotlights: FlexiNiche, FlexiSlim and FlexiRapid, are characterized by their great adaptability to any type of new-build and existing liner or concrete pool and can be fitted in a niche, on the surface of to bushing.

\* Product code without inserts: Parker model

SKIMMERS - PREFABRICATED POOLS